

Position Description

Position	Senior Medical Officer– Fixed term roles 0.8 FTE - 1.0 FTE role (negotiable) available from March 2023 through till mid-2025.
Team / Service	Plastic Surgery
Subspecialty Interest	General plastic surgery – there may be scope to accommodate areas of sub specialty interest
Directorate	Surgical
District	Capital, Coast & Hutt Valley
Responsible to	Operations Manager Plastic Surgery, Dental & OMF for operational issues, Clinical Head of Department Plastic Surgery for clinical / professional oversight.
Children’s Act 2014	This position is classified as a children’s worker, requiring a safety check including police vetting before commencing and every three years.
Location	This position is expected to work from Hutt Hospital, but may at times work in various hospitals across the district, including doing clinics at other hospitals.

Te Whatu Ora

The Health System in Aotearoa is entering a period of transformation as we implement the Pae Ora/Healthy Futures vision of a reformed system where people live longer in good health, have improved quality of life, and there is equity between all groups.

We want to build a healthcare system that works collectively and cohesively around a shared set of values and a culture that enables everyone to bring their best to work and feel proud when they go home to their whānau, friends and community. The reforms are expected to achieve five system shifts. These are:

1. The health system will reinforce Te Tiriti principles and obligations
2. All people will be able to access a comprehensive range of support in their local communities to help them stay well
3. Everyone will have equal access to high quality emergency and specialist care when they need it
4. Digital services will provide more people the care they need in their homes and communities
5. Health and care workers will be valued and well-trained for the future health system

Context

Capital, Coast & Hutt Valley district provides hospital and health services in primary, secondary and tertiary healthcare to a total population base of approximately 445,000 citizens.

In 2018 Wellington the Lonely Planet voted Wellington the ‘coolest capital’ and the best city in New Zealand which has many cultural attractions.

The Plastic Surgery Service is a tertiary service provided at Hutt Hospital.

We are accountable for meeting the needs of and improving health outcomes for all the constituent populations of our district, and the region more broadly.

Together we:

- Provide secondary and tertiary, medical and surgical hospital services alongside community based health care
- Fund local health providers and work collaboratively with the community to create and support multiple health education initiatives and projects within the region
- Deliver health services directly as well as contracting external providers
- Provide local, sub-regional, regional and national health services as well as community-based health, rehabilitation and support services.

The majority of the district's population live in Wellington and Lower Hutt. The Māori and Pacific populations of Lower Hutt and Wellington are proportionally similar, with the largest Pacific population in the region in Porirua. Kapiti and Upper Hutt have similar numbers of Māori and Pacific people. Most people are enrolled with a GP near their place of residence, so the increasing focus on community-based healthcare is expected to lead to better health outcomes for these population groups. Hutt Hospital provides secondary and some tertiary, medical and surgical hospital services alongside community based health care from its main facility in Lower Hutt City. In addition to funding local health providers and working collaboratively with the community to create and support multiple health education initiatives and projects, Hutt Hospital is the centre for five tertiary regional and sub-regional services - Plastics, Maxillofacial and Burns Services; Rheumatology; Oral Maxillo Facial Services; Regional Public Health; and Regional (Breast and Cervical) Screening Services.

Wellington Regional Hospital in Newtown is the region's main tertiary hospital with services such as complex specialist and acute procedures, intensive care, cardiac surgery, cancer care, neurosurgery and renal care. The hospital is the key tertiary referral centre for the lower half of the North Island and the upper half of the South Island.

Kenepuru Community Hospital and Kapiti Health Centre provide secondary and community services based in Porirua and the Kapiti Coast

MHAIDS is the mental health, addictions and intellectual disability service for the Wairarapa District and Capital, Coast & Hutt Valley District, with multiple specialist facilities. Ratonga Rua-o- Porirua is our forensic, rehabilitation and intellectual disability inpatient unit.

Te Tiriti o Waitangi and Māori Health Outcomes

Māori are the indigenous peoples of Aotearoa. We have particular responsibilities and accountabilities through this founding document of Aotearoa. We value Te Tiriti and have adopted the following four goals, developed by the Ministry of Health, each expressed in terms of mana and the principles of:

- Mana whakahaere** Effective and appropriate stewardship or kaitiakitanga over the health and disability system. This goes beyond the management of assets or resources.
- Mana motuhake** Enabling the right for Māori to be Māori (Māori self-determination); to exercise their authority over their lives, and to live on Māori terms and according to Māori philosophies, values and practices including tikanga Māori.

Mana tāngata Achieving equity in health and disability outcomes for Māori across the life course and contributing to Māori wellness.

Mana Māori Enabling Ritenga Māori (Māori customary rituals) which are framed by Te Aō Māori (the Māori world), enacted through tikanga Māori (Māori philosophy & customary practices) and encapsulated within mātauranga Māori (Māori knowledge).

We will target, plan and drive our health services to create equity of health care for Māori to attain good health and well-being, while developing partnerships with the wider social sector to support whole of system change.

The Vision, Mission and Values from our District

We bring forward and join our values within our district. These will change as we become a team of teams within Te Whatu Ora.

Hutt Valley

Vision

Whanau Ora ki te Awakairangi: Healthy people, healthy families and healthy communities are so interlinked that it is impossible to identify which one comes first and then leads to another.

Mission

Working together for health and wellbeing.

Ō mātou uara – Values

Mahi Pai 'Can do': Mahi Tahi in Partnership: Mahi Tahi Te Atawhai Tonu Always caring and Mahi Rangatira being our Best

Capital and Coast

Vision

Keeping our community healthy and well

Mission

Together, Improve the Health and Independence of the People of the District

Value

Manaakitanga – Respect, caring, kindness
Kotahitanga – Connection, unity, equity
Rangatiratanga – Autonomy, integrity, excellence

District Responsibility

The district leadership have collective accountability for leading with integrity and transparency a progressive, high performing organisation, aimed at improving the health and independence of the community we serve and achieving equitable outcomes for all. The leadership team are responsible for achieving this aim, aligned with our Region, within the available resources, through a skilled, empowered, motivated and supported workforce in line with government and HNZ policy.

Service Perspective

- Provision of high quality care to plastic surgical patients with a wide range of acute and elective surgical conditions
- Provision of a wide range of plastic surgical procedures, either on site or at other hospitals with an emphasis on providing increased access for seeing and treating patients with skin cancer
- To participate in the plastic surgical on call roster in a 1:10 rotation and / or surgeon of the day model
- Provision of inpatient and outpatient care

- To support and lead junior medical staff and take an active role in interdisciplinary team education and actively support and utilise nurse specialist role/s as appropriate
- To actively participate in quality improvement, clinical audit activities and service development meetings and initiatives

Purpose of the role

- Monthly timetable will include (not an exhaustive list) the following activities
 - Sub specialty clinic (if this can be accommodated)
 - General clinic
 - Theatre sessions
 - Management of skin lesions through 'see and treat' clinics
 - 'Out of town' clinic
- This role will contribute to the on call roster / surgeon of the day model

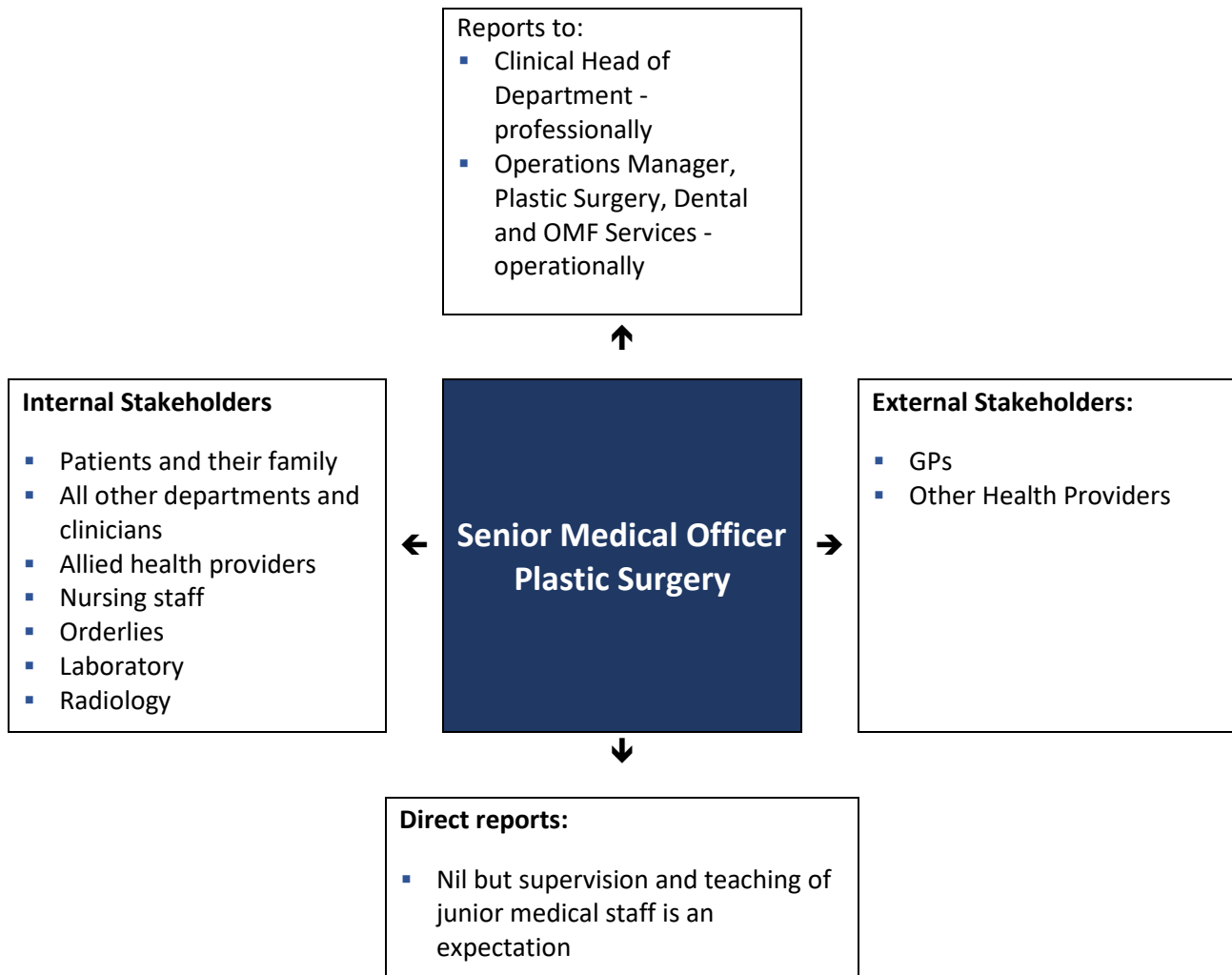
Key Accountabilities

The following role accountabilities may evolve with organisational change and there may be additional duties, relevant to this position that will be required to be performed from time to time.

Key accountabilities	Deliverables / Outcomes
1. Technical outcomes / accountabilities	<ul style="list-style-type: none"> ▪ Relates well to all kinds of people – inside and outside the organisation ▪ Builds appropriate rapport ▪ Builds constructive and effective relationships ▪ Uses diplomacy and tact ▪ Can diffuse even high-tension situations comfortably
2. Leadership	<ul style="list-style-type: none"> ▪ Clinical leadership is effectively demonstrated by working alongside other medical staff and other multidisciplinary staff within the department. ▪ Actively participates in the development of clinical and departmental policies and protocols as able or requested ▪ Acts as a role model for medical staff and demonstrates high quality professional standards. ▪ Maintains harmonious and productive relationships with all colleagues ▪ Demonstrates effective communication styles fostering goodwill and collegiality between all disciplines ▪ Understands department and wider hospital systems and functions and works collaboratively within a multidisciplinary team ▪ Supports the service business plan targets ▪ Fosters an environment where audit and teaching is valued and supported ▪ Fosters an environment that encourages all staff to have a stake in the future of the department ▪ Acts as an effective liaison and interacts with other departments to ensure excellent patient outcomes ▪ Feels comfortable in a changing environment

Key accountabilities	Deliverables / Outcomes
	<ul style="list-style-type: none"> Embraces untested and new approaches dealing with work problems and looks for opportunities
3. Professional development including Clinical Medical Education (CME)	<ul style="list-style-type: none"> Undertakes appropriate continuing medical education in order to maintain competency as required by professional college Maintains a high level of competency as indicated by national and international trends Involvement in innovations in work practices e.g. guidelines, new procedures, service redesign etc. Responsible for undertaking Continuing Medical Education in order to maintain competency and stay clinically up-to-date with current techniques and sharing with other colleagues Takes an active part in credentialing and re-credentialing that will occur throughout the period of employment
4. Te Tiriti o Waitangi	<ul style="list-style-type: none"> Service activity, development and implementation is undertaken in accordance with the provision of the Treaty of Waitangi – partnership, protection and participation Consultation is undertaken with appropriate Maori communities
5. Health & Safety	<ul style="list-style-type: none"> Is aware of own medical and dental status including TB, HIV, Hepatitis etc. Ensures actively manages own health Displays commitment through actively supporting health and safety initiatives Ensures all staff maintains adequate safety standards on the job through consultation, training and supervision Ensures own and others safety at all times Complies with policies, procedures and safe systems of work Reports all incidents/accidents, including near misses in a timely fashion Is involved in health and safety through participation and consultation

Key Relationships & Authorities



Capability Profile

Solid performance in the role requires demonstration of the following competencies. These competencies provide a framework for selection and development.

Competency	Behaviours
Interpersonal Acumen	<ul style="list-style-type: none">▪ Relates well to all kinds of people within the organisation▪ Builds appropriate rapport▪ Builds constructive and effective relationships▪ Uses diplomacy and tact
Organising	<ul style="list-style-type: none">▪ Can marshal resources (people, funding, material, support) to get things done▪ Can orchestrate multiple activities at once to accomplish a goal▪ Uses resources effectively and efficiently▪ Arranges information and files in a useful manner
Leadership	<ul style="list-style-type: none">▪ Clinical leadership is effectively demonstrated by working alongside other medical staff and other multidisciplinary staff within the department

Competency	Behaviours
	<ul style="list-style-type: none"> Actively participates in the development of clinical and departmental policies and protocols as able or requested Acts as a role model for medical staff and demonstrates high quality professional standards Maintains harmonious and productive relationships with all colleagues Demonstrates effective communication styles fostering goodwill and collegiality between all disciplines Understands department and wider hospital systems and functions and works collaboratively within a multidisciplinary team Supports the service business plan targets
Problem Solving	<ul style="list-style-type: none"> Uses rigorous logic and methods to solve difficult problems with effective solutions Probes all fruitful sources for answers Looks beyond the obvious and doesn't stop at the first answer
Quality & Innovation	<ul style="list-style-type: none"> Provides quality service to those who rely on one's work. Looks for ways to improve work processes - suggests new ideas and approaches. Explores and trials ideas and suggestions for improvement made by others. Shows commitment to continuous learning and performance development.

Experience and Capability

Essential qualifications, skills and experience

A. Knowledge, Skills & Experience:

- This role would suit someone has general plastic surgery interest
- Recent experience in all aspects of plastic surgery
- Able to deal with a wide range of conditions both acutely and electively
- Works well in a collaboration with the multidisciplinary team

B. Essential Professional Qualifications / Accreditations / Registrations:

- Registration with the Medical Council of New Zealand through comparable health systems pathway with full registration in the country of origin
- Relevant experience and training and at least 1 year post graduate experience
- If applying from overseas, you must meet the New Zealand Immigration Service requirements

Ma tini, ma mano, ka rapa te whai
By joining together we will succeed

Te Whatu Ora is committed to Te Tiriti o Waitangi principles of partnership, participation, equity and protection by ensuring that guidelines for employment policies and procedures are implemented in a way that recognises Māori cultural practices.

We are committed to supporting the principles of Equal Employment Opportunities (EEO) through the provision and practice of equal access, consideration, and encouragement in the areas of employment, training, career development and promotion for all its employees.